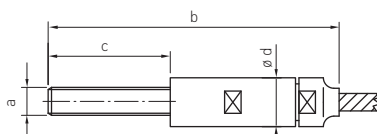



AUSSENGEWINDE EXTERNAL THREADS

AUSSENGEWINDE, VERSCHRAUBT EXTERNAL THREAD, SWAGELESS CONNECTION



Artikelnummer Rechtsgewinde Part number RH thread	Artikelnummer Linksgewinde Part number LH thread	a	b	c	ø d	ø Seil ø rope	kN
826-0200-030	827-0200-030	M6	85	30	13	2*	2
826-0200-060	827-0200-060	M6	115	60	13	2*	2
826-0300-030	827-0300-030	M6	85	30	13	3*	4,5
826-0300-060	827-0300-060	M6	115	60	13	3*	4,5
826-0400-030	827-0400-030	M6	85	30	13	4*	8
826-0400-060 	827-0400-060	M6	115	60	13	4*	8
826-0500-030	827-0500-030	M8	87	30	15	5*	12,6
826-0500-060	827-0500-060	M8	117	60	15	5*	12,6
826-0600-030	827-0600-030	M8	87	30	15	6*	18,1
826-0600-060	827-0600-060	M8	117	60	15	6*	18,1
826-0800-080	827-0800-080	M10	190	80	22	8	32,2
826-1000-100	827-1000-100	M14	250	115	30	10	46,8
826-1200-120	827-1200-120	M16	265	140	32	12	67,6

Werkstoff 1.4404 | *Nicht geeignet für Spiralseil 1x19 | kN = Bruchkraft
Material AISI 316L | *Not suitable for strand 1x19 | kN = breaking load

Alle Angaben in Millimetern
All dimensions in millimeters